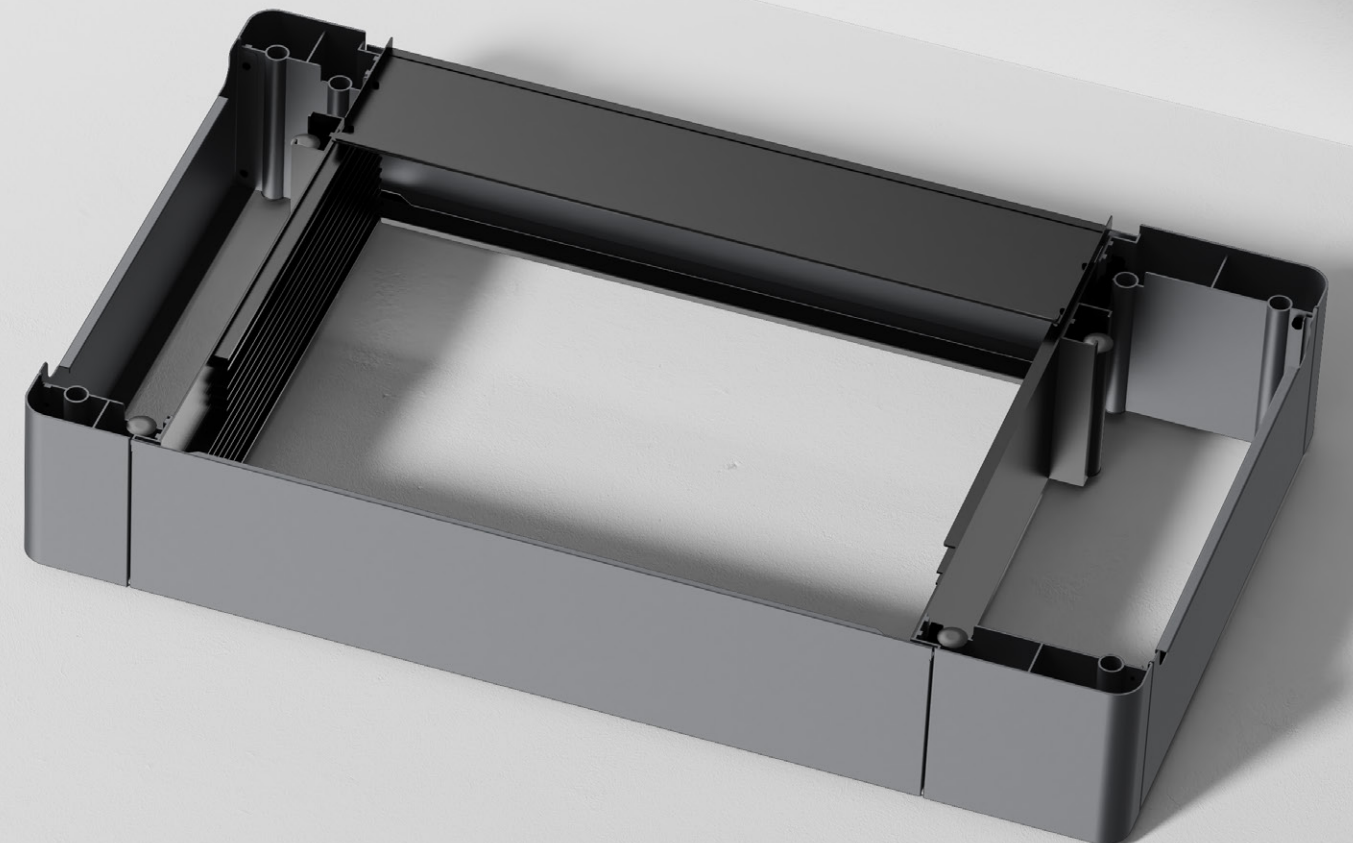


# XTOOL | P2 Riser Base

User Manual

XTOOL



# Statement

- Thank you for choosing xTool products!
- If you use the product for the first time, read carefully all the accompanying materials of the product to improve your experience with it. If you do not use the product according to the instructions and requirements of the Manual, or mis-operate the product due to mis understanding, etc., the Company shall bear no responsibility for any loss resulting therefrom.
- The Company has collated the content of the Manual rigorously and carefully, but errors or omissions may remain.
- The Company is committed to continuously improving product functions and service quality, and therefore reserves the right to change any product or software described in the Manual and the content of the Manual at any time.
- The Manual is intended to help you use the product properly and does not include any description of hardware and software configuration. For product configuration, refer to the related contract (if any) and packing list, or consult your distributor. Images in the Manual are for reference only and the actual product may vary.
- Protected by copyright laws and regulations, the Manual shall not be reproduced or transcribed in any way, or be transmitted on any wired or wireless network in any manner, or be translated into any language, or be modified in any way, such as content, image, or layout modification, without the prior written authorization of the Company.

## Safety first (important)



**Do not leave the device unattended when it is working.**



**Keep combustible materials away from the device.**

- During laser processing, do not put your hands into the riser base, or your skin may get hurt. If you are accidentally burned by laser beams, disinfect the skin with a povidone-iodine solution immediately and apply burn ointment to the wound. If you are severely burned, go to a hospital and see a doctor as soon as possible.
- To process a material that is too long for xTool P2, you need to open the door panels of the riser base. Diffuse reflection of laser beams occurs, and your eyes may be exposed to the laser beams. Do not look at them directly through the doors of the riser base, or your eyes may get hurt.
- Do not open the door panels unless you are to process a material that is too long for xTool P2.
- Do not engrave or cut any material that contains PVC or vinyl (processing plastics is not recommended). These materials (and other materials containing chlorine/chloride) may generate corrosive vapor that is extremely harmful to the human body and can cause damage to the device. Any damage caused by engraving or cutting any material containing PVC or vinyl is not covered by the Company's warranty.
- Do not engrave or cut any unknown materials. Vaporization or melting of many materials, which include but are not limited to PVC and polycarbonate, may release harmful smoke.

Statement ----- 1

Safety first (important) ----- 1

List of items ----- 2

Meet the riser base ----- 2

Assemble the riser base ----- 3

Use the riser base ----- 8

Preparations ----- 8

Process thick materials ----- 11

Process regular or irregular cylindrical materials ----- 12

Process materials that are too long for xTool P2 ----- 12

After-sales services ----- 13

For online help, visit [support.xtool.com](https://support.xtool.com).  
线上帮助, 请访问 [makeblock.com/cn/docs/x-tool-accessories/p2-riser-base](https://makeblock.com/cn/docs/x-tool-accessories/p2-riser-base).

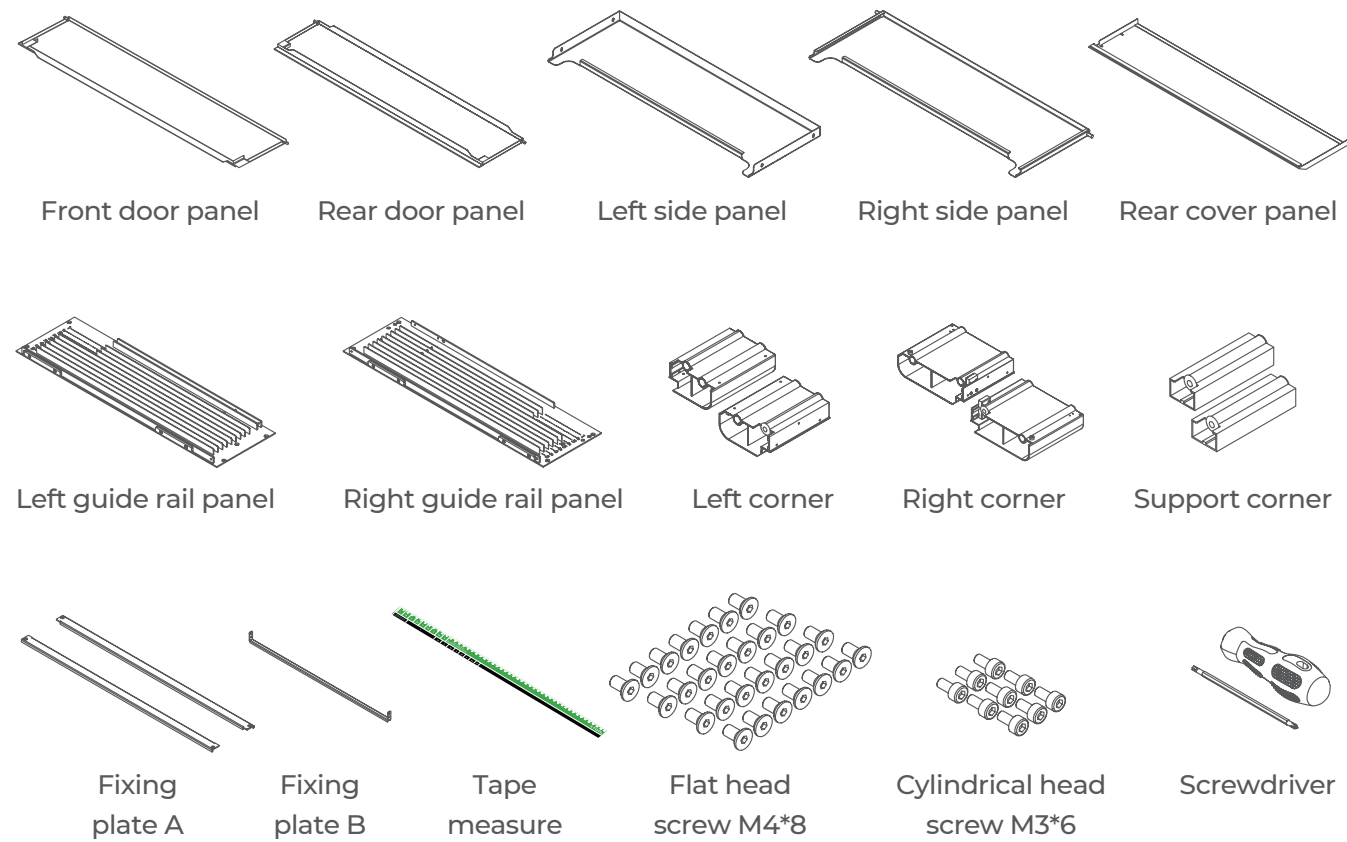


[support.xtool.com](https://support.xtool.com)

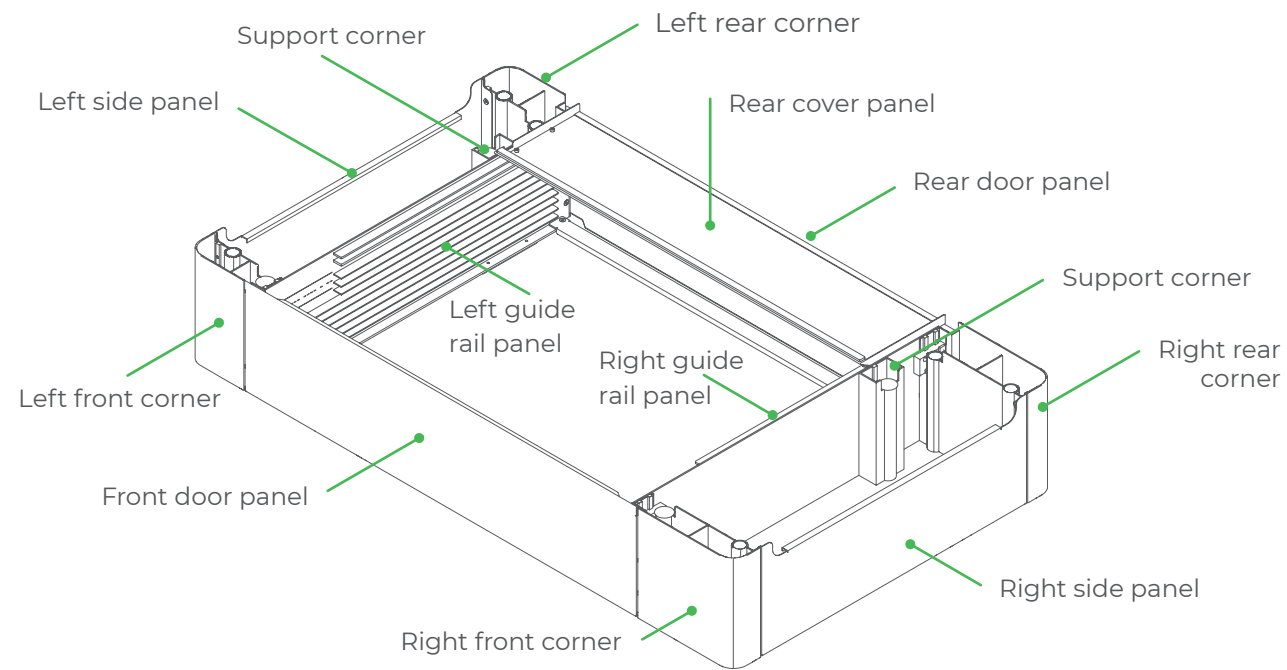


[makeblock.com/cn/docs/x-tool-accessories/p2-riser-base](https://makeblock.com/cn/docs/x-tool-accessories/p2-riser-base)

# List of items

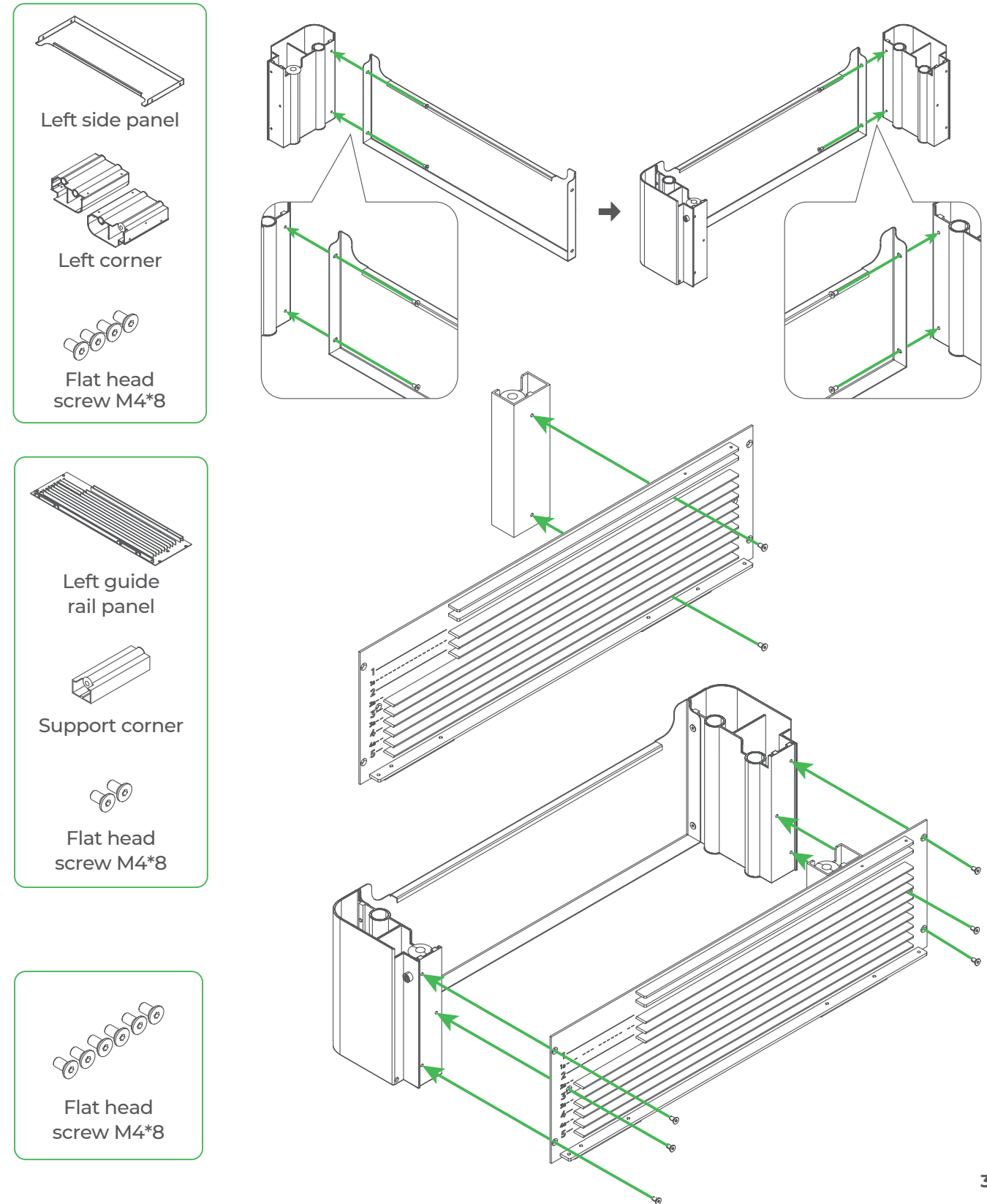


# Meet the riser base



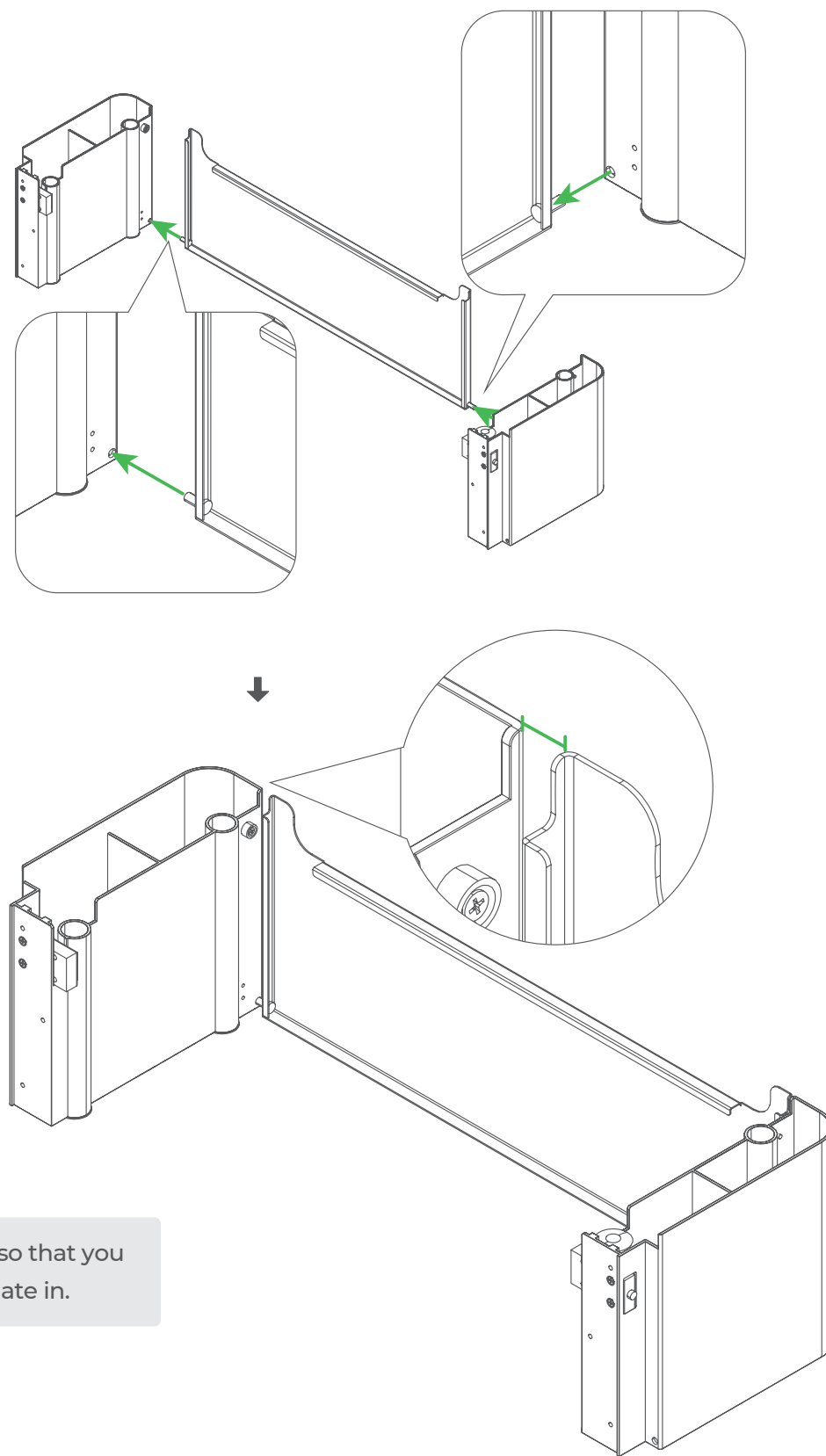
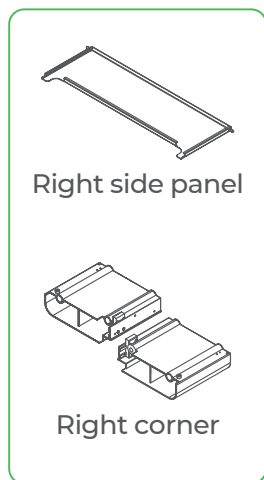
# Assemble the riser base


## 1. Assemble the left structure

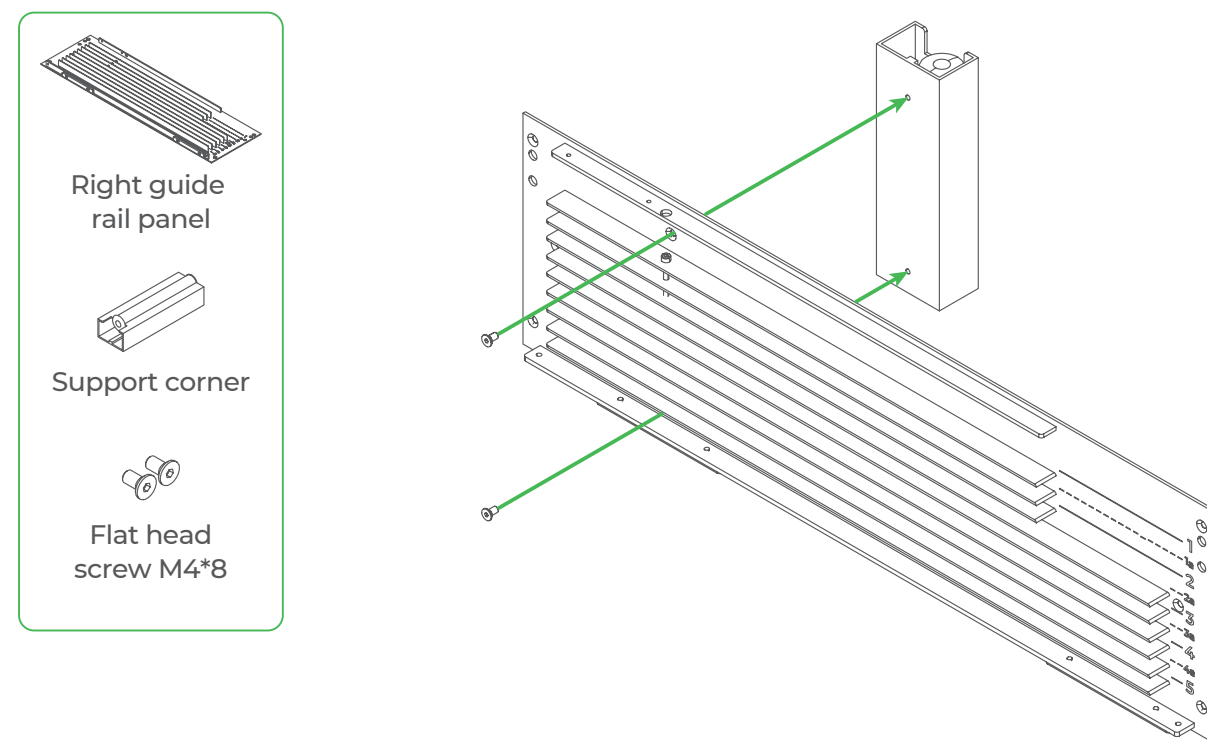
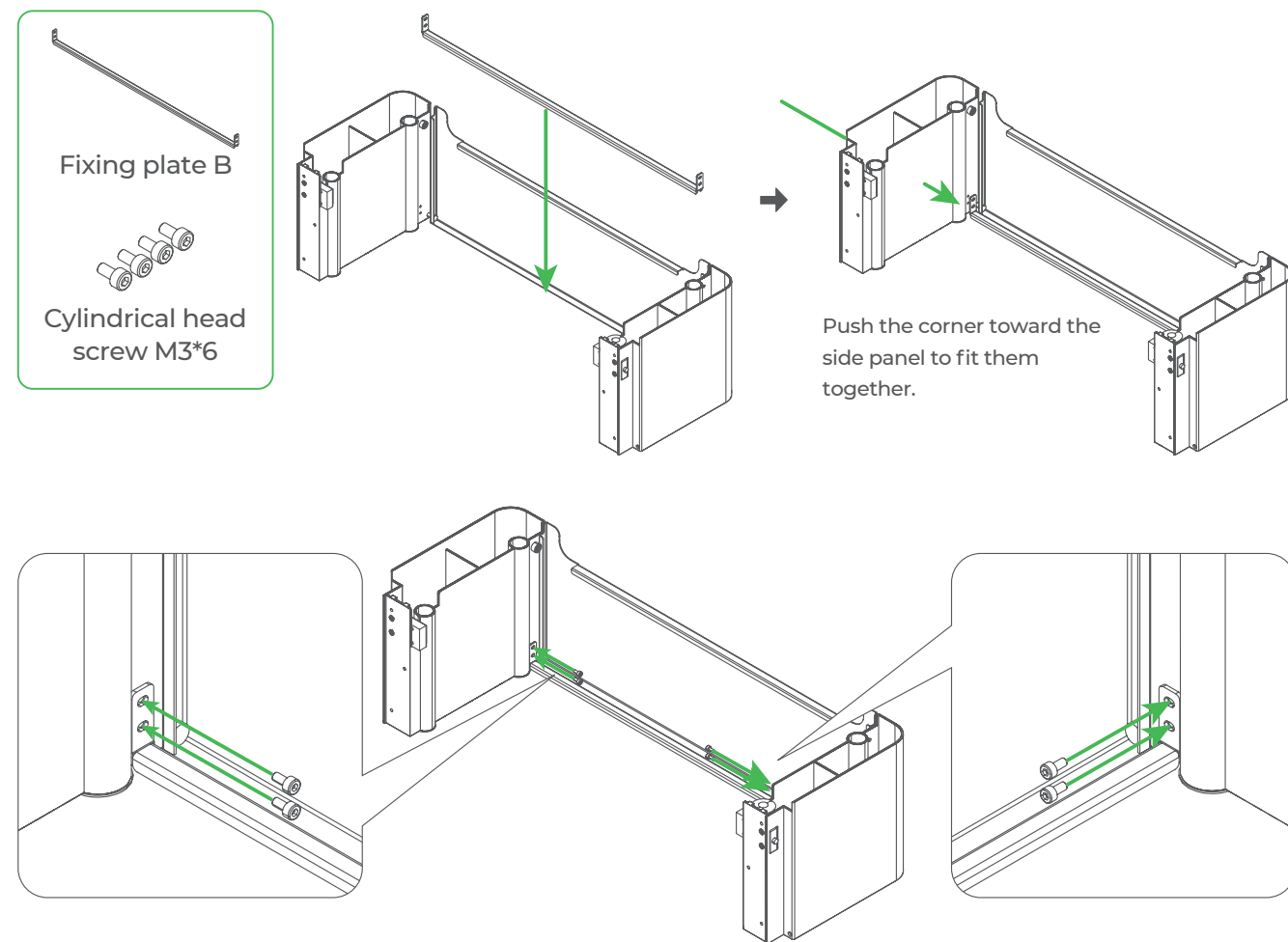


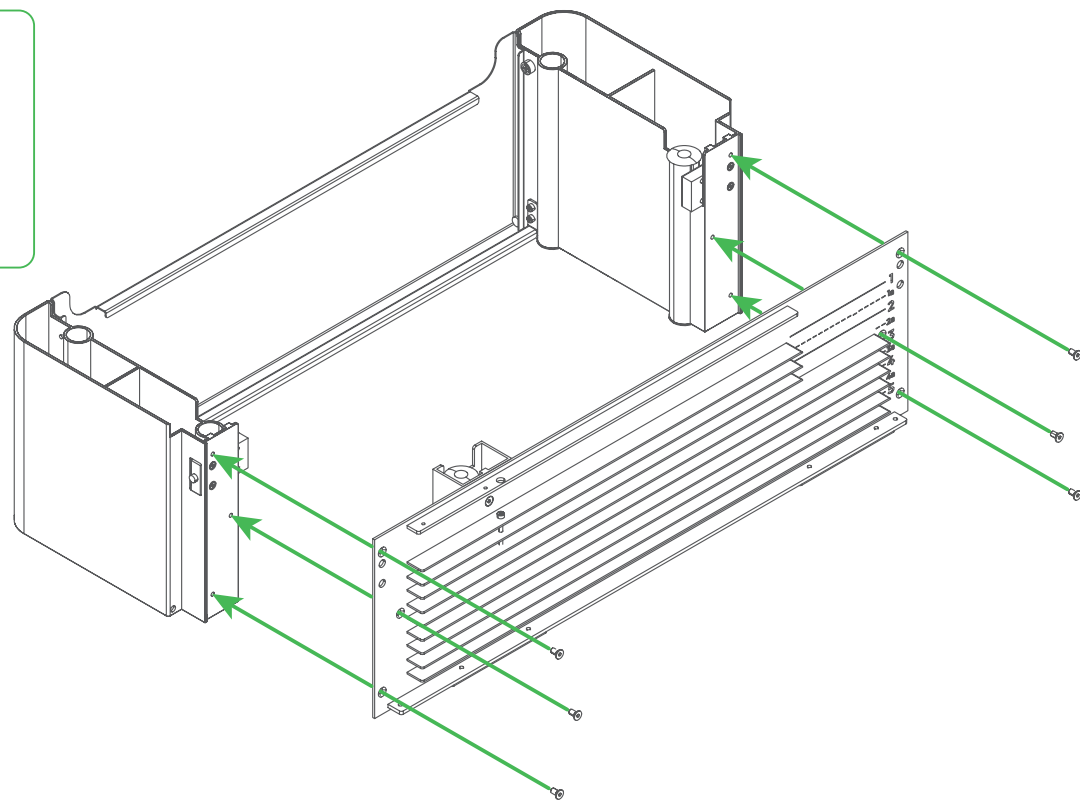
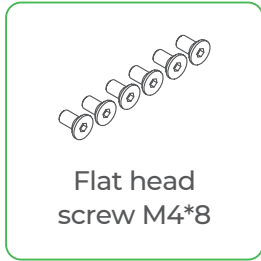


## 2. Assemble the right structure

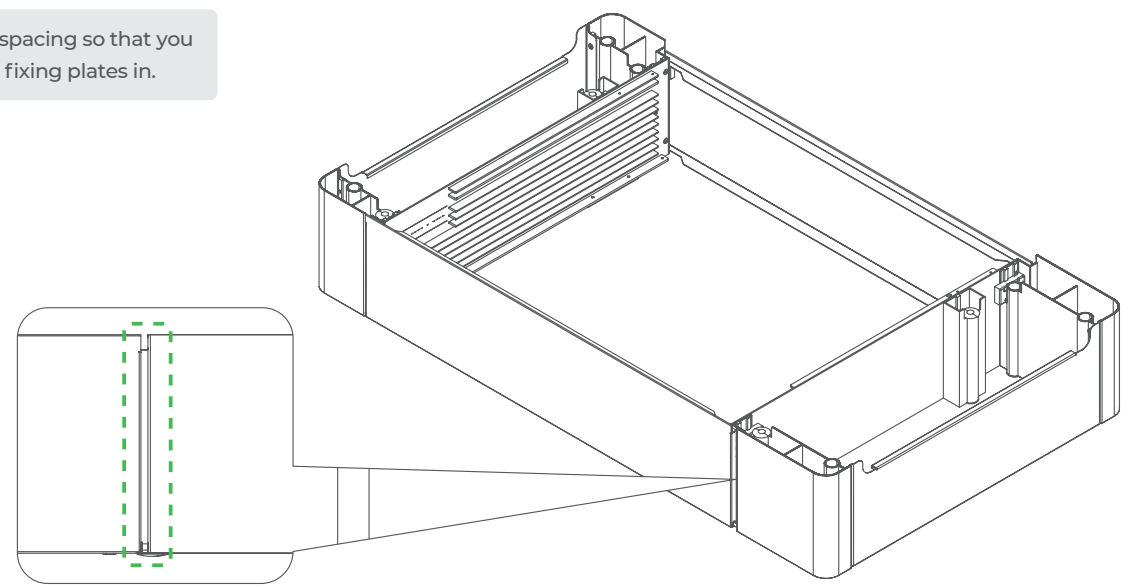


 Reserve a spacing so that you can fit the fixing plate in.

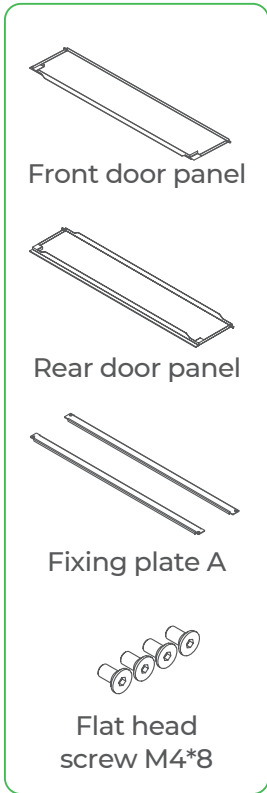




Reserve a spacing so that you can fit the fixing plates in.

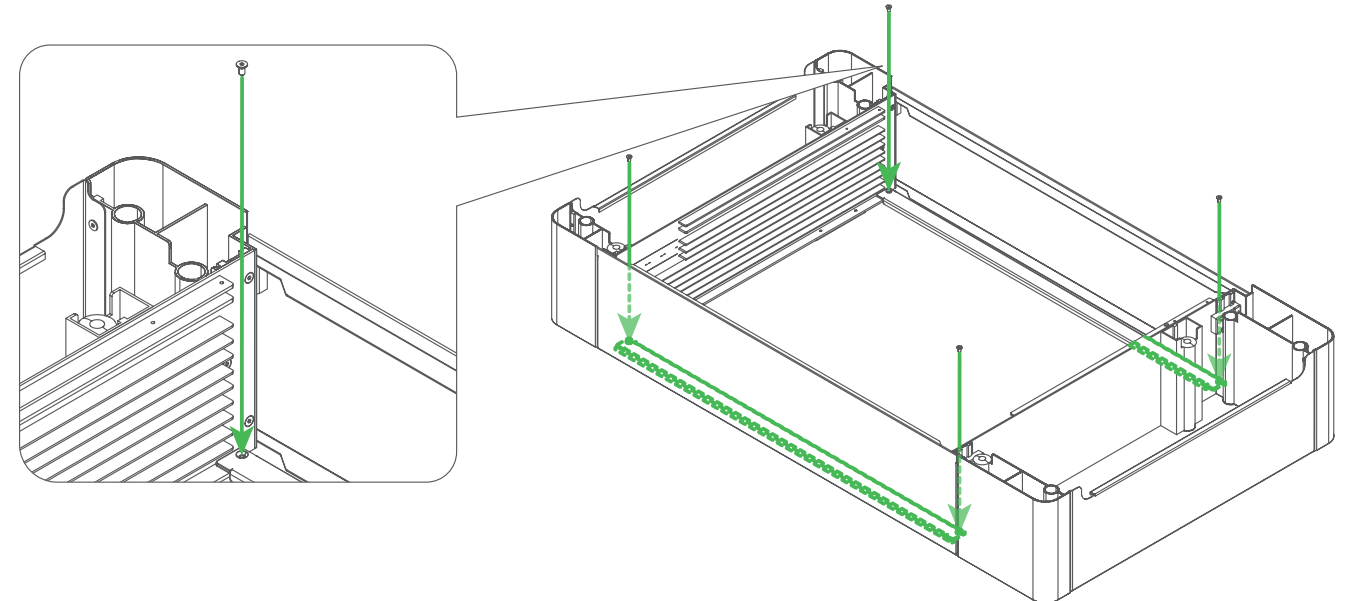
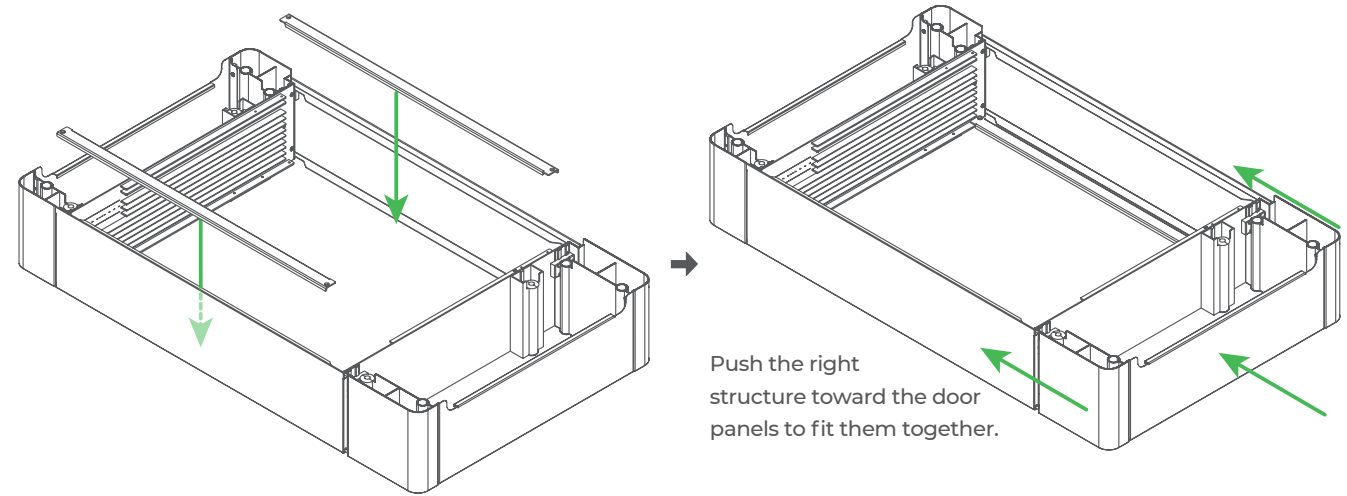
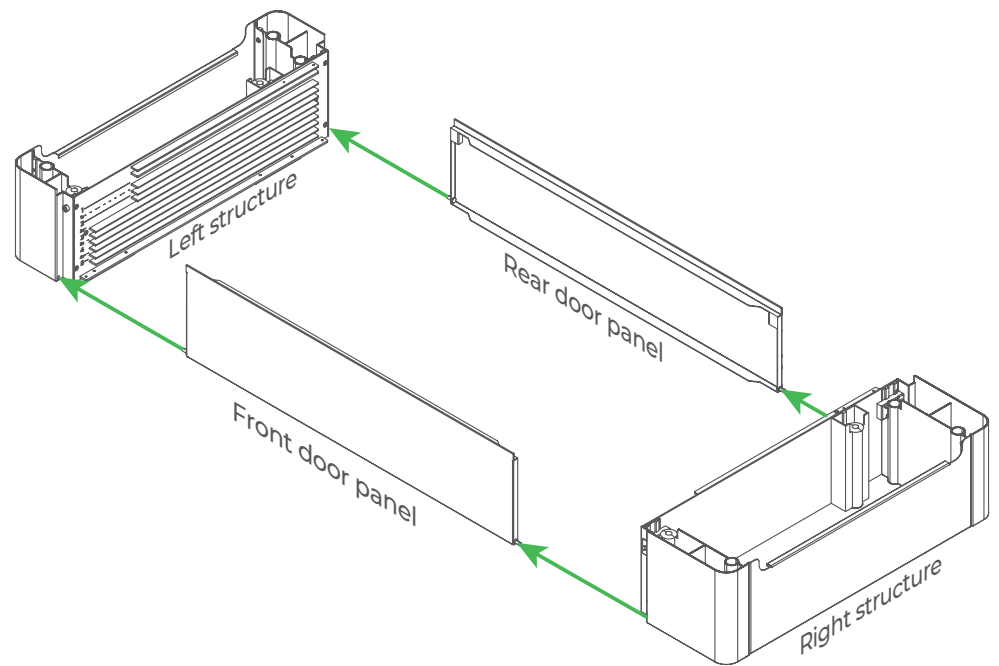


### 3. Fit the door panels

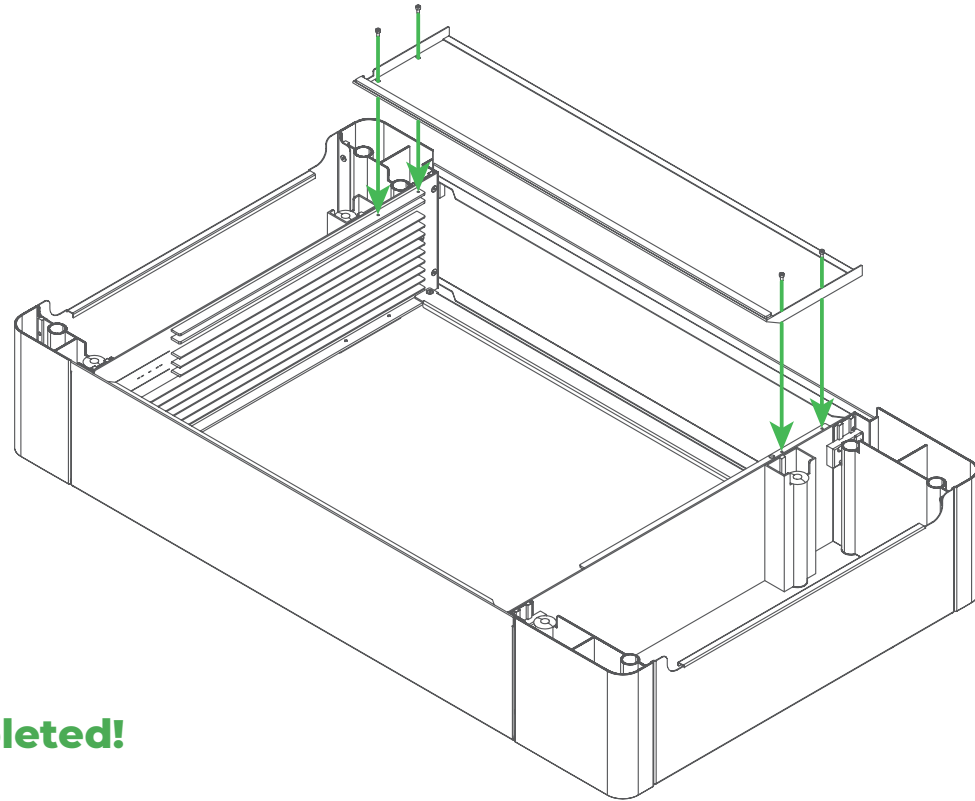
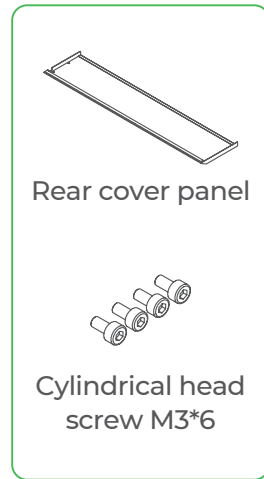


Front door panel      Rear door panel

The front door panel is slightly wider than the rear one.



## 4. Fit the rear cover panel



Assembly completed!

## Use the riser base

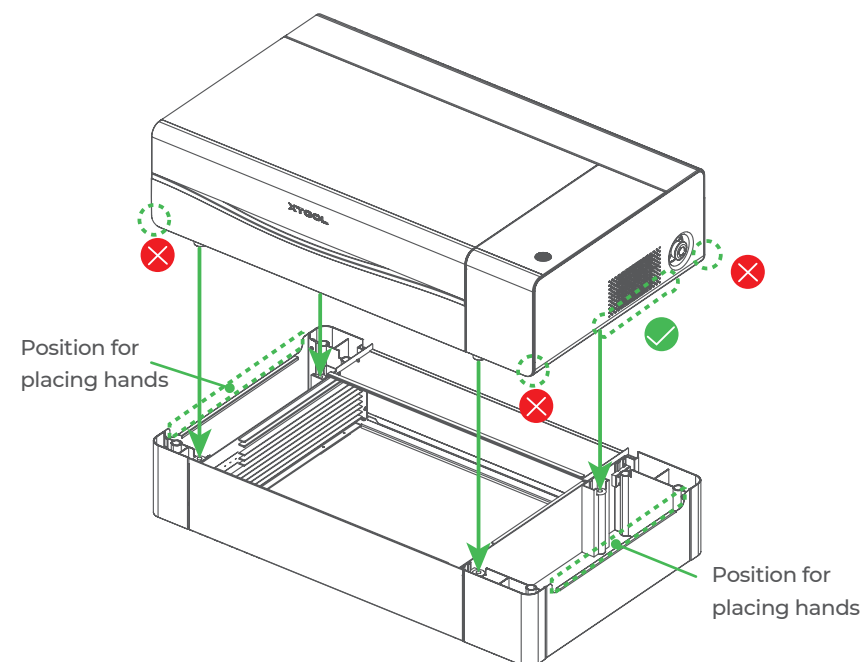
### Preparations

xTool P2 is not included in the pack. You need to purchase it before use.

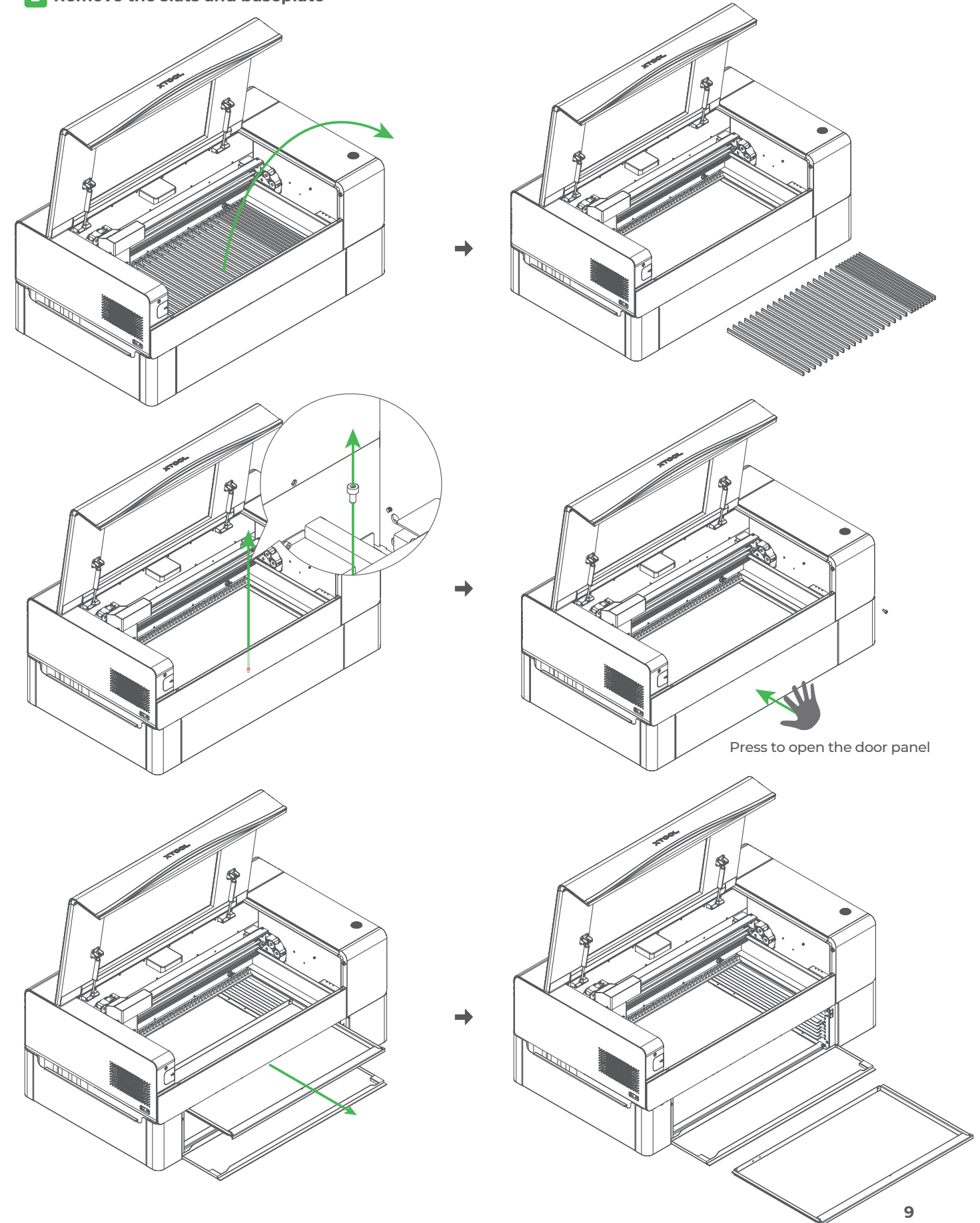
#### 1 Place xTool P2



The riser base is designed with positions on the left and right sides for placing your hands. To place xTool P2, hold it on the sides instead of at the corners, so that your hands don't get hurt.



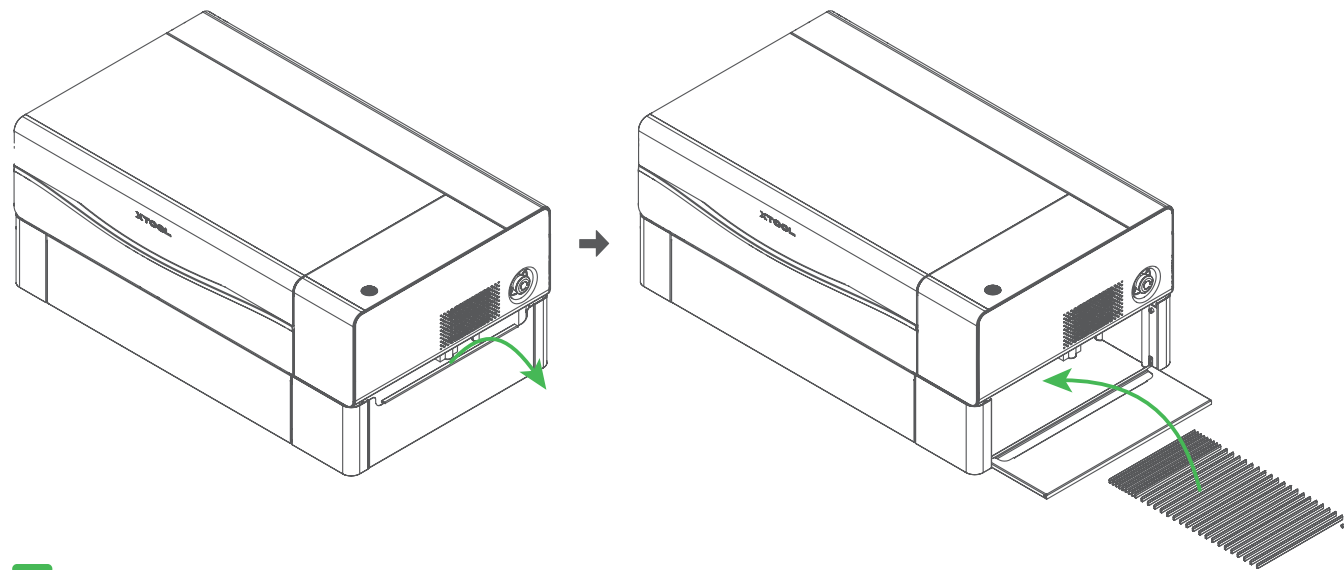
#### 2 Remove the slats and baseplate





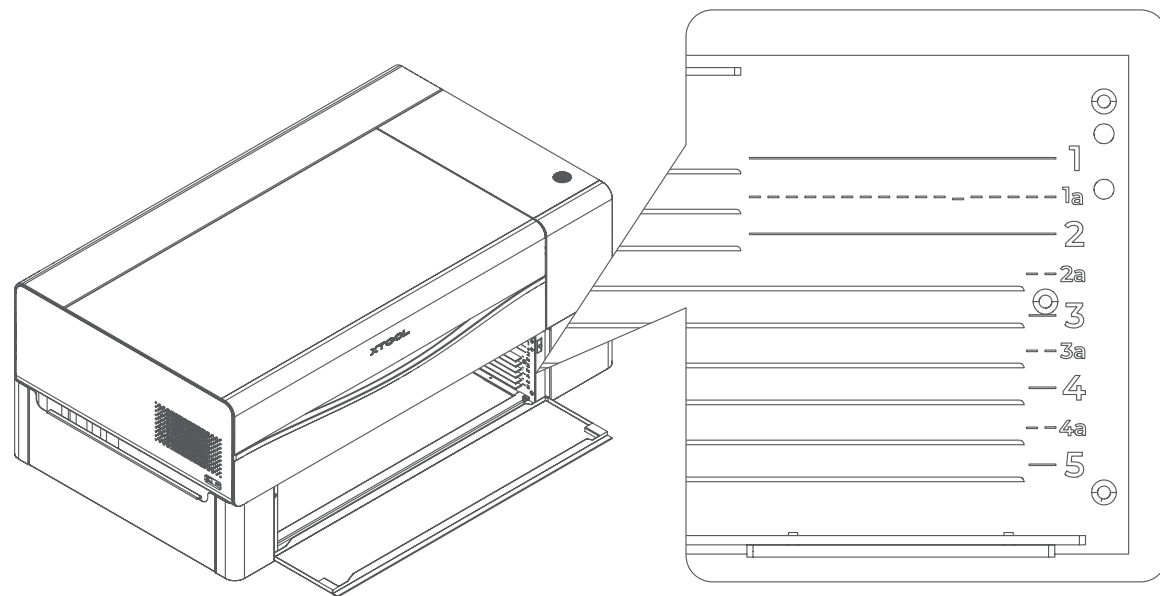


You can keep the removed screw and slats, for subsequent use, in the storage space on the right side of the riser base.



### 3 Place the baseplate

The riser base is designed with 9 placement levels to adapt to materials of multiple thicknesses. You need to determine the level at which the baseplate of xTool P2 is to be placed based on the processing mode used and the thickness of the material to be processed.



### 4 Use the tape measure

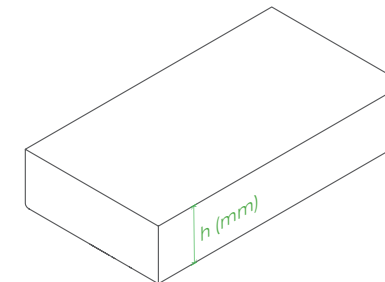


For details about how to use the tape measure, visit [support.xtool.com/hc/en-us/articles/13280821588631](https://support.xtool.com/hc/en-us/articles/13280821588631).



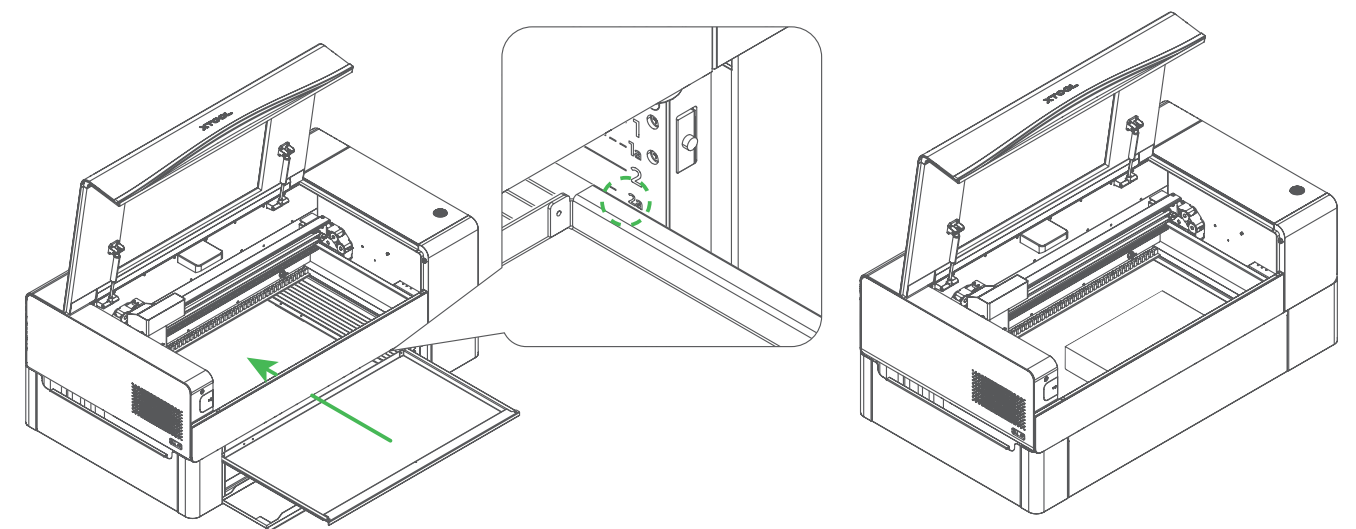
## Process thick materials

To process a flat material of a thickness greater than 30 mm, you can use **Open plane** processing, and determine the level at which the baseplate is to be placed based on the thickness of the material.

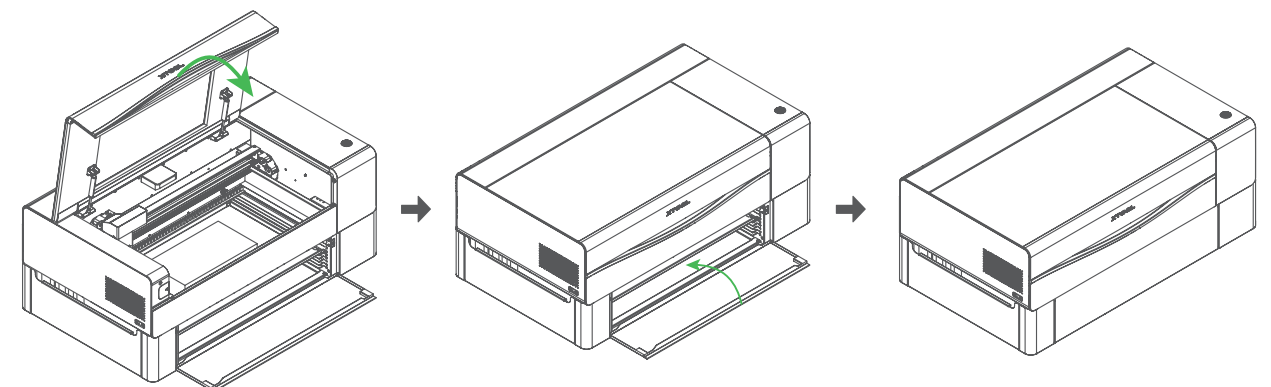


1	$30 \leq h \leq 102$	3a	$93 \leq h \leq 167$
1a	$43 \leq h \leq 115$	4	$105 \leq h \leq 179$
2	$55 \leq h \leq 127$	4a	$118 \leq h \leq 192$
2a	$68 \leq h \leq 142$	5	$130 \leq h \leq 200$
3	$80 \leq h \leq 154$		

For example, if a flat material is **130 mm** thick, you can place the baseplate at **level 2a** and then place the material for processing.



To use **Open plane** processing, you need to close the lid and door panels after placing the baseplate and material.



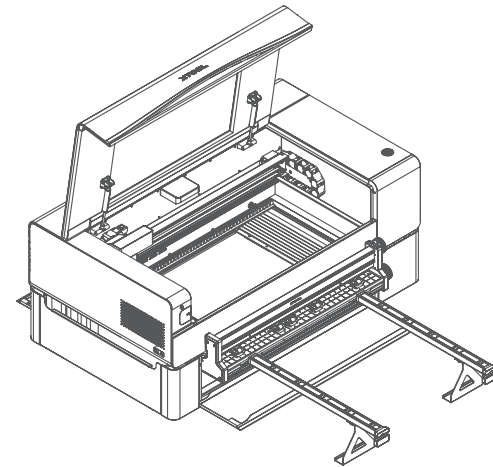
## Process materials that are too long for xTool P2

### Conveyor feeder

To use **Conveyor feeder** processing, you need to use the riser base in combination with xTool Conveyor Feeder.



xTool Conveyor Feeder is not included in the pack. You need to purchase it before use. For details about how to use it, see the user manual delivered with it.



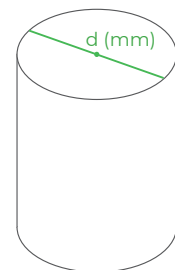
## Process regular or irregular cylindrical materials

To process a cylindrical material of a diameter greater than 42 mm, you need to use the riser base in combination with xTool Rotary Attachment and use **Laser cylindrical** processing. You can determine the level at which the baseplate is to be placed based on the diameter of the material.



xTool Rotary Attachment is not included in the pack. You need to purchase it before use.

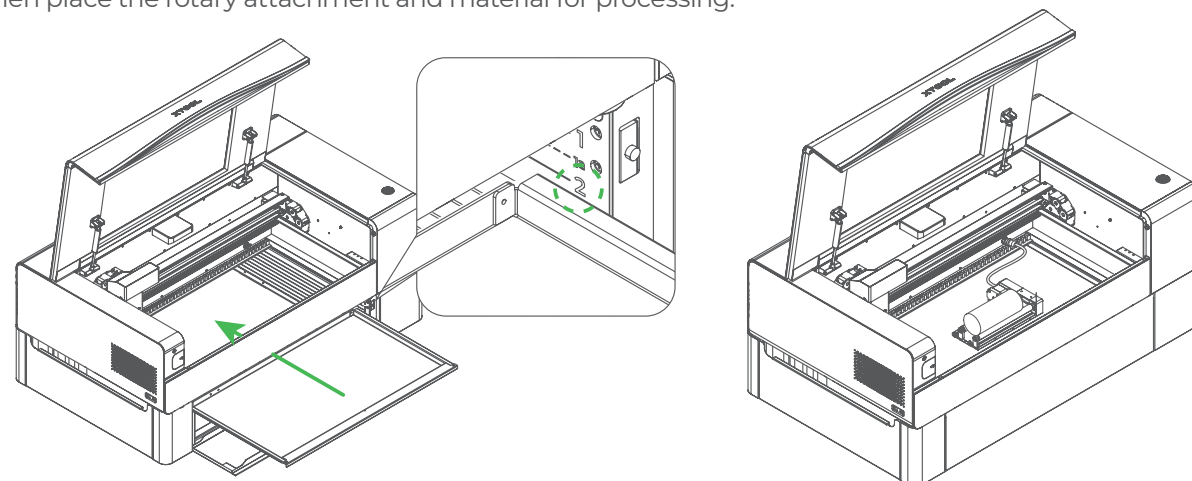
### 1 Roller mode



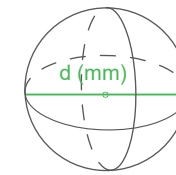
1	$42 \leq d \leq 83$
1a	$54 \leq d \leq 94$
2	$67 \leq d \leq 104$
2a	$79 \leq d \leq 115$
3	$92 \leq d \leq 126$

3a	$104 \leq d \leq 139$
4	$117 \leq d \leq 150$
4a	$129 \leq d \leq 163$
5	$142 \leq d \leq 174$

For example, to process a material of **diameter 90 mm** in roller mode, you can place the baseplate at **level 2** and then place the rotary attachment and material for processing.

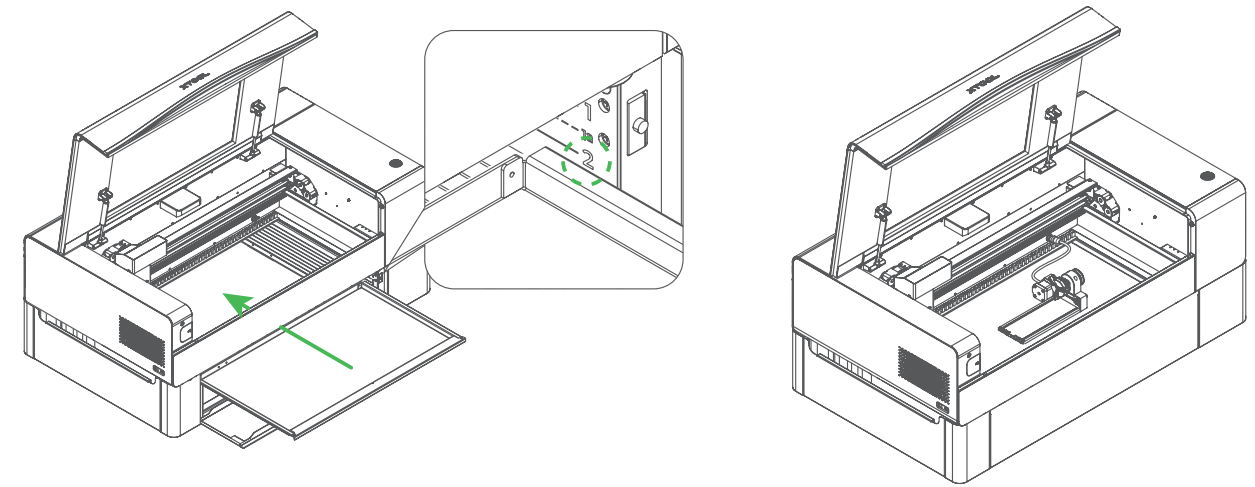


### 2 Chuck mode



1a	$0 < d \leq 90$
2	$90 \leq d \leq 100$

For example, to process an irregular cylindrical material of **diameter 95 mm** in chuck mode, you can place the baseplate at **level 2** and then place the rotary attachment and material for processing.



## After-sales services

For technical support, contact us at [support@xtool.com](mailto:support@xtool.com).  
For more information about after-sales services, visit [support.xtool.com](http://support.xtool.com).

## 售后服务

更多产品信息, 可访问 [makeblock.com/cn/docs](http://makeblock.com/cn/docs)。

如需技术支持, 可通过以下方式联系我们:

- QQ 技术支持: 800182013
- 技术支持热线: 400-893-0004
- 微信公众号: 童心制物售后

