

MUNBYN

Version 3.00

Thermal Label Printer

User Manual



Unleash Business Creativity

RealWriter 402 Bluetooth

Contents

1. Unboxing and Setup	1
1.1. In the Box	1
1.2. Features	2
2. Printer Setup	3
2.1. Quick Connection	4
2.2. Label Setup	5
3. Bluetooth Connection	6
3.1. Mobile Phone/Pad Printing	6
3.2. MUNBYN Editor	11
3.3. macOS Direct Bluetooth Printing	12
3.4. Windows Direct Bluetooth Printing	16
4. USB Connection for Laptop/PC	20
4.1. Mac Driver Installation for USB-C Cable	20
4.2. Windows Driver Installation for USB-C Cable	23
5. Pro Tips	26
6. FAQ	27
6.1. How do I maintain the print head?	27
6.2. Why is the printed label not clear?	27
7. Light Indicators	28
8. Feed Button	28
9. Specifications	29
10. Safety Notices	30
11. FCC Statement	31
12. Tech Support	32

Scan the QR code below to access user manuals in other languages, including **English, German, French, Spanish, and Italian.**



User Manual in English
 Deutsches Benutzerhandbuch
 Manual de usuario en español
 Manuel d'utilisation en français
 Manuale dell'utente in italiano

1. Unboxing and Setup

1.1. In the Box



A Printer

B Power Cord

C USB-C Cable

D USB-C to USB Adapter

E Power Adapter

F User Manual

G Quick Tips

H Labels×10

If any accessories are missing or damaged, please contact us for assistance.



support@munbyn.com

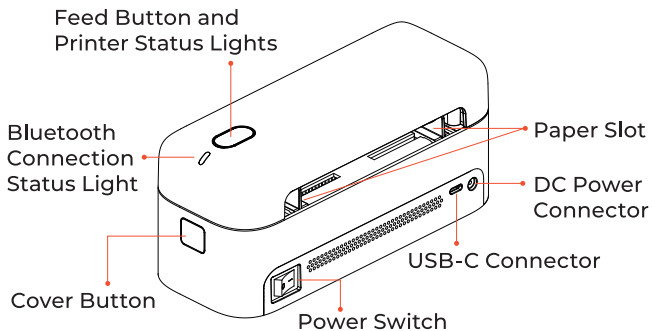


+1 (628) 229 3612



24 hours a day
Monday to Friday

1.2. Features



Tips	
Cover Button	Press the buttons to open the printer cover
Feed Button and Printer Status Lights	<ol style="list-style-type: none"> 1. For the feed button function, refer to page 28. 2. For the status lights information, refer to page 28.
Bluetooth Connection Status Light	For details on the Bluetooth connection status light, refer to page 28.
DC Power Connector	Use the original power adapter to connect the DC power connector to the external power supply.
USB-C Connector	<ol style="list-style-type: none"> 1. Use the original USB-C cable to connect the USB-C connector to your computer. 2. If you are using a Windows computer with only a USB port, use the USB adapter to connect the original USB-C cable.
Power Switch	Keep the power switch off before connecting the power supply.
Paper Slot	Once the paper is placed, adjust the slot to securely hold the paper in place.

2. Printer Setup

Scan the QR code on the right for more video tutorials:

munbyn.biz/402bnv



More Setup Videos

Note: Enter the link using only lowercase letters and numbers.

2.1. Quick Connection

Please follow the sequence shown in the picture below to operate.



1) Ensure the printer is powered off.



2) Connect the power adapter to the printer.



3) Connect the power cord and plug in the power supply.



4) Connect the USB-C cable to the printer.
(Skip this step for Bluetooth connection)

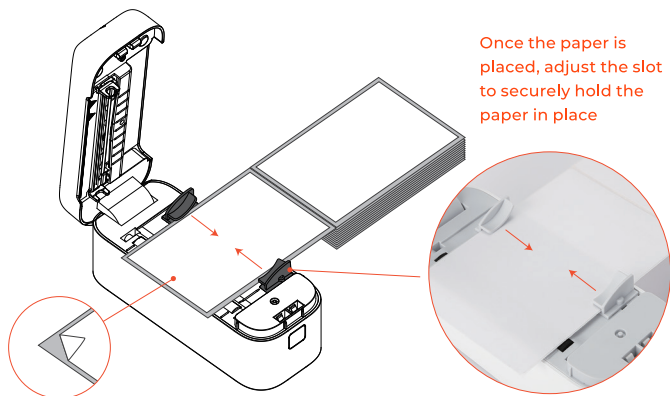


5) Connect the USB-C cable to the laptop.
(Skip this step for Bluetooth connection)



6) Turn the printer on.

2.2. Label Setup



Automatic Label Identification:

Load no less than 4 consecutive labels into the printer. Once the cover is closed, the machine will automatically attempt to feed the paper.

If it fails to do so, please manually calibrate the paper:

- Press and hold the feed button until you hear a "beep" sound.
- The printer will automatically perform label calibration after the beep.

3. Bluetooth Connection

3.1. Mobile Phone/Pad Printing

Scan the QR code on the right for the video tutorial:

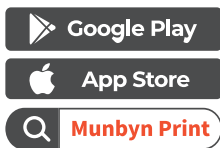
munbyn.biz/402bphone

Note: Enter the link using only lowercase letters and numbers.



App Setup Video

1. Download the "**MUNBYN Print**" App from the **App Store** or **Google Play** on your device, or scan the QR code below. If a PIN is required, enter "0000".



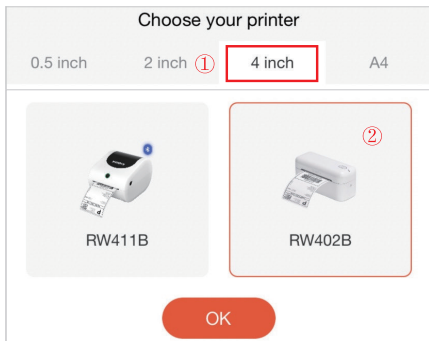
Munbyn Print

2. Open the **MUNBYN Print App** and grant permissions for local file access and Bluetooth functionality.

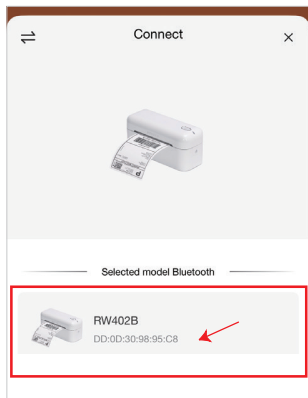


Note: These permissions are required by Google's policies, which we strictly follow. Your privacy is our priority and will be fully protected.

3. Find and select "RW402B" as shown in the picture.



4. The app will display a pop-up confirming the Bluetooth connection, and the printer's Bluetooth status light will turn blue.





Note: Before printing, ensure the printer is set up as shown in Figure 1. If you encounter the error depicted in Figure 2, verify that the printer is powered on and review steps 3 to 4 for instructions on how to reconnect.

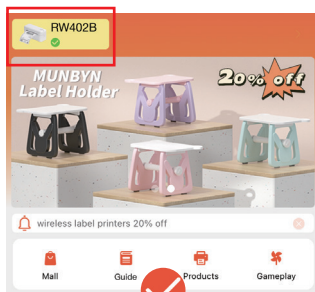


Figure 1

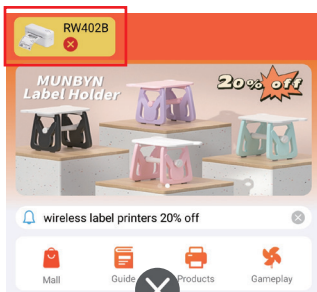
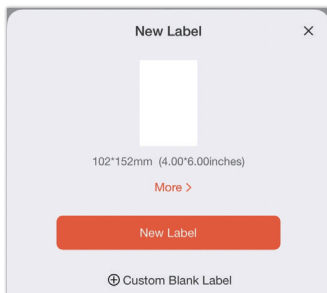
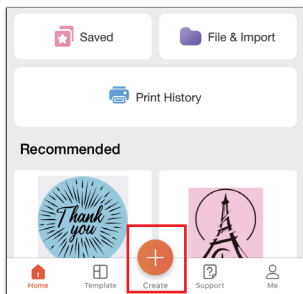


Figure 2

Once your device is connected, follow these steps to create and print:

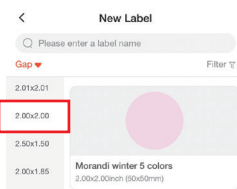
5. Click "**Create**" on the Home page.
6. Design a new label or customize an existing one.



Note: The default size selected in the app is 4 x 6 inches (102 x 152 mm).

Please verify the dimensions for any alternative labels and ensure that the app's label size setting matches your paper's actual size.

For example, if your label paper is 2 x 2 inches, ensure that your label file is set to 2 x 2 inches and that the printer paper setting is also configured to 2 x 2 inches.



7. Design label

Then click "**Print**" to check that the label preview matches the preset.

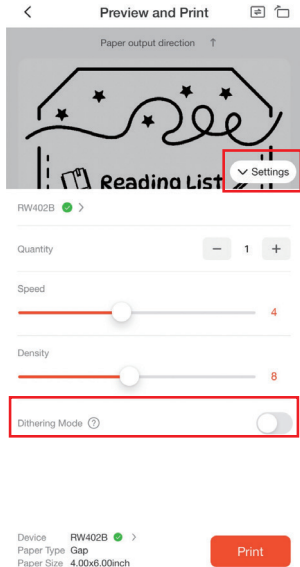
Note: Design within the template area, content outside will not print.



8. Print label

Tap "**Settings**" to modify the print density and the number of copies. Once the settings are configured, tap "Print."

Tips: When printing images, enable the "**Dithering Mode**" for enhanced print quality.

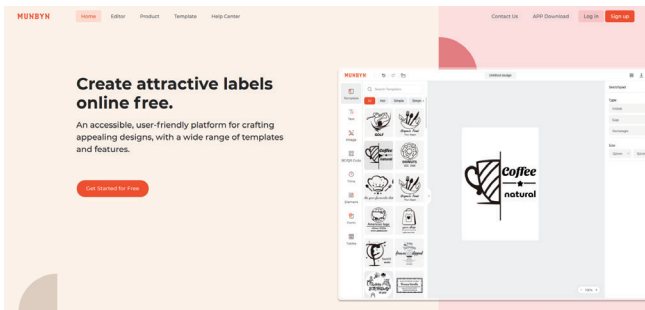


3.2. MUNBYN Editor

(Supports Bluetooth-enabled Mac, Windows, and Chrome devices for driver-free printing, cutting, DIY labeling)

Tips: **MUNBYN Editor** is an accessible, user-friendly platform that allows you to easily design, personalize, crop, and print fun designs on Google Chrome. It supports printing for Windows, Mac, and Chrome devices.

Website Link: editor.munbyn.com



Scan the QR codes to get printing tips:



Bluetooth Printing Tutorial
(no-driver required)
munbyn.biz/wbp



System Printing Tutorial
(USB driver required)
munbyn.biz/wsp



PDF Cropping Tutorial
munbyn.biz/pdf

3.3. macOS Direct Bluetooth Printing

Scan the QR code on the right for the video tutorial:

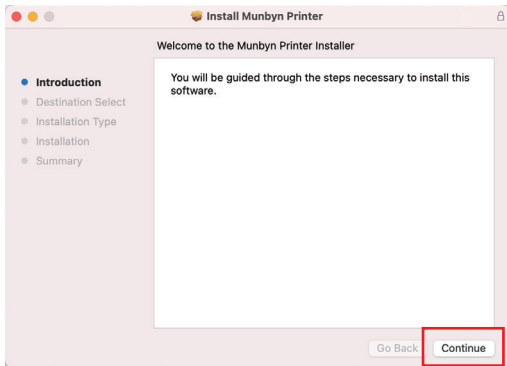
munbyn.biz/402bmacbc

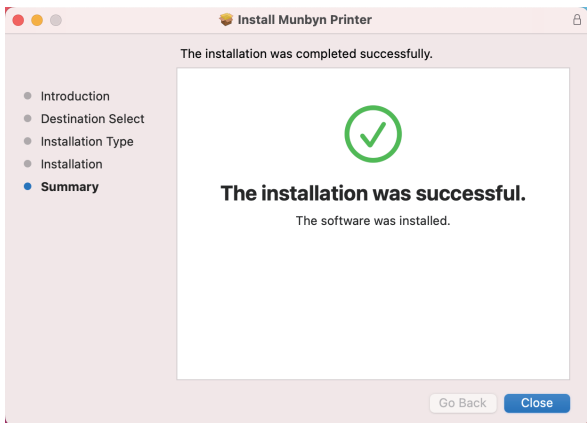


Bluetooth Setup Video

Tips: You can print via Bluetooth directly using **MUNBYN Editor** without the need to install drivers. For details, please refer to section **3.2**.

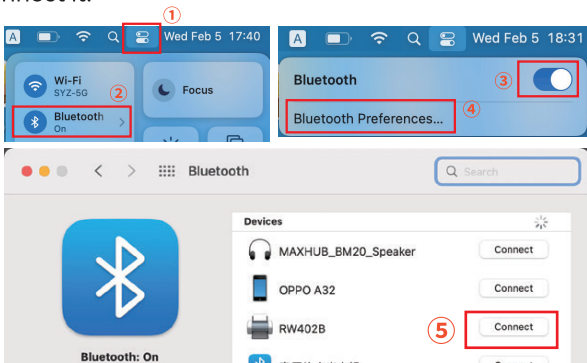
1. Turn the printer on.
2. Access the driver by using this link:
munbyn.biz/402bmacd
3. Run the driver, and follow the installation steps until download is completed.



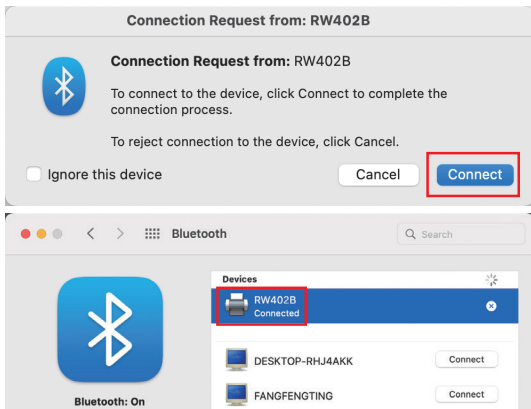


4. Turn on the computer's Bluetooth.

5. Click "Bluetooth Preferences" and choose your printer to connect it.

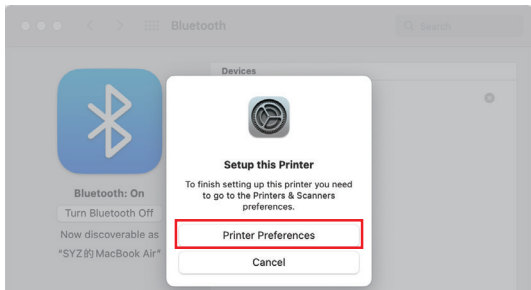


6. Click "**Connect**" to complete Bluetooth connection.

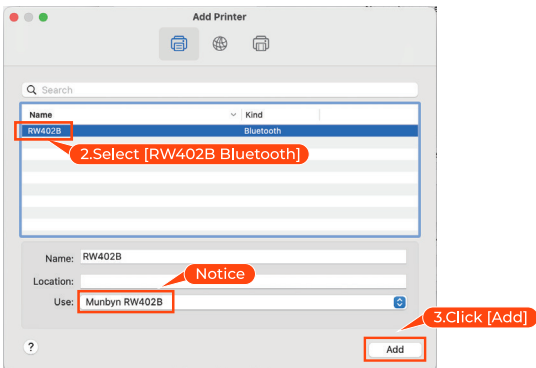
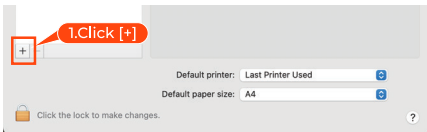


Tips: If it displays "**Not Connected**", please double-click on your printer to reconnect until and wait it shows "Connected".

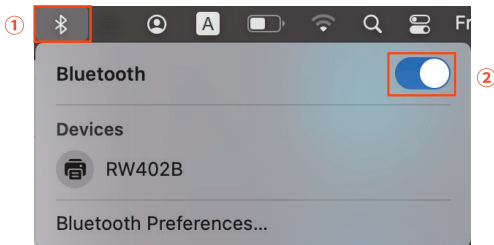
7. Click "**Printer Preferences**" to finish setting up your printer.



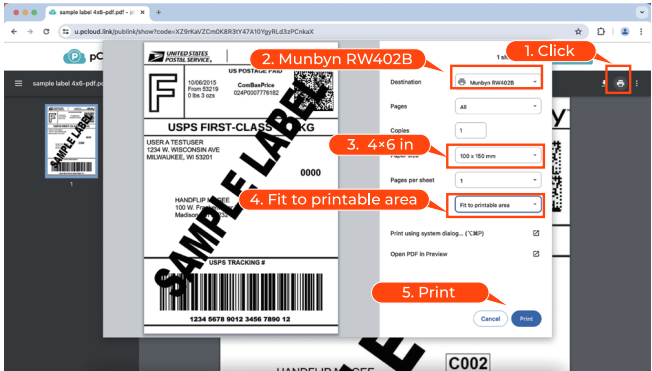
8. Click the '+' icon to add the printer to your computer.



9. Turn off Bluetooth, and then turn it back on.



10. Access label templates and test for proper printing by using this link: munbyn.biz/sample46



11. Setup is complete.

To create custom labels, personalize your designs, and get detailed instructions on cropping, please refer to Section [3.2](#) for how to use our **MUNBYN Editor**.

3.4. **Windows** Direct Bluetooth Printing

Scan the QR code on the right for the video tutorial:

munbyn.biz/402bwindbc



Bluetooth Setup Video

Note:

- 1) Enter the link using only lowercase letters and numbers.
- 2) Direct Bluetooth connection is available for both Windows and Mac systems.
- 3) Use the **MUNBYN Editor** for easy driver-free Bluetooth printing. See Section 3.2 for details.
- 4) For ARM Architecture users, use the **MUNBYN Editor** for the best printing experience.

Please follow the steps below:

1. Turn on the computer's Bluetooth.

Note: Do not connect devices directly through the system's Bluetooth search interface.

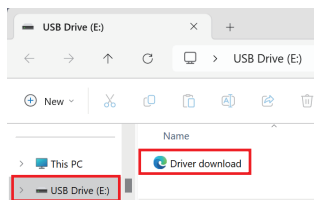
2. Install the driver.

Here are two methods to download the driver:

- ① Access the driver by using this link:

munbyn.biz/402bwind

- ② Connect your printer to the computer with a USB-C cable. Once connected, find the removable drive on your computer, open it, and run the driver file that matches your operating system to install.



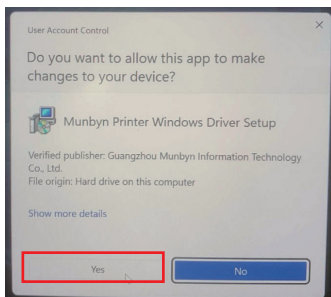
Download macOS driver with the model RW402B printer

Download Windows driver with the model RW402B printer

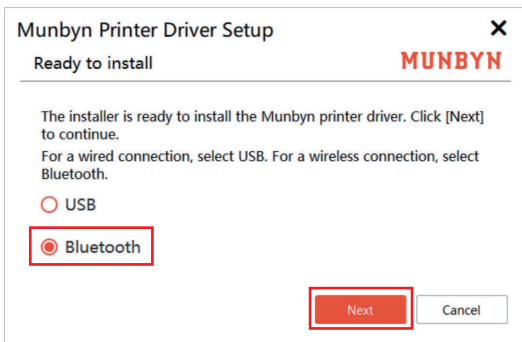
View the document with the model RW402B printer

3. Run the driver, and follow the installation steps until download is completed.

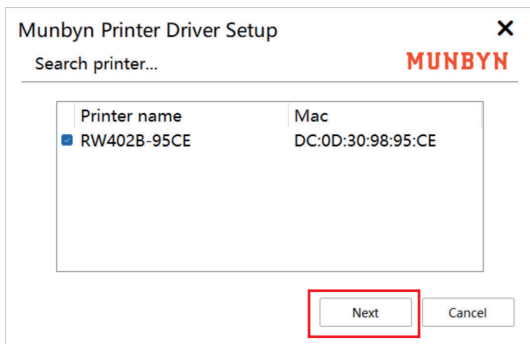
4. During Windows driver installation, you might see a security warning. Click "Yes" to agree to continue. Please don't worry, this is normal.



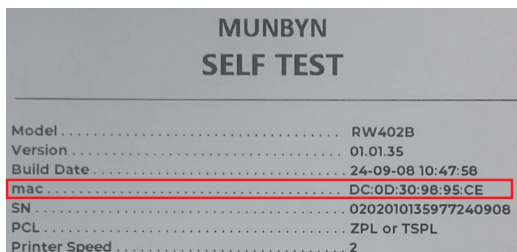
5. Click "**Bluetooth**" > "**Next**".



6. Select the printer name, and click "Next".



Note: For multiple devices, press the Feed Button twice to print a self-test page. Check the last four digits of the MAC address to identify and connect to your specific device.



7. Access label templates and test for proper printing by using this link: munbyn.biz/sample46



4. USB Connection for Laptop/PC

4.1. Mac Driver Installation for USB-C Cable

Scan the QR code on the right for the video tutorial:

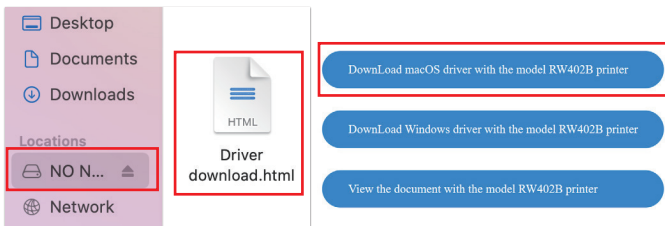
munbyn.biz/402bmacv

Note: Enter the link using only lowercase letters and numbers.



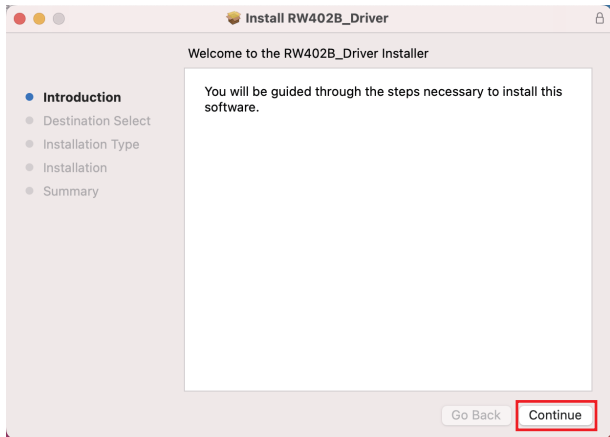
macOS Setup Video

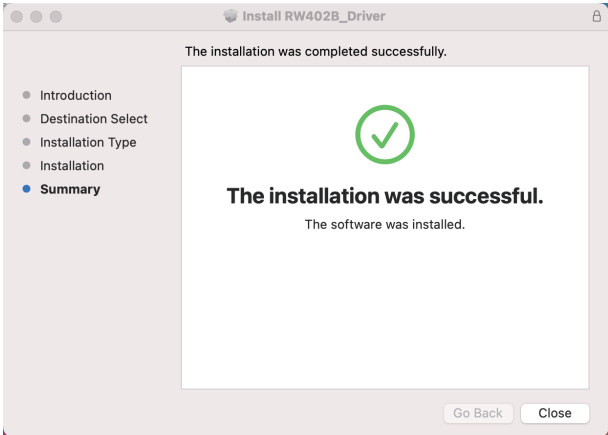
1. Turn your printer on.
2. Connect the printer to your computer using the original USB-C cable.
3. Open the removable drive on your computer, and run the driver file that matches your operating system.



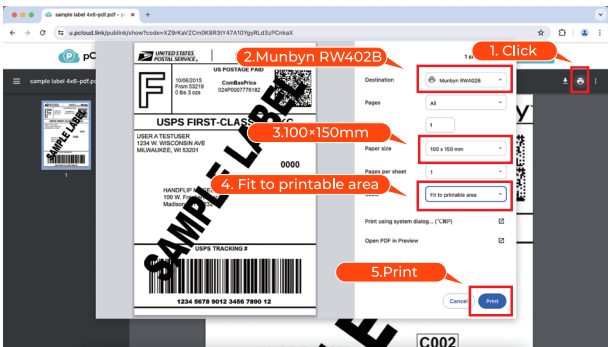
Tips: You can also access the driver by using this link:
munbyn.biz/402bmacd

4. Run the driver, and follow the installation steps until download is completed.





5. Access label templates and test for proper printing by using this link: munbyn.biz/sample46



6. Setup is complete.

To create custom labels, personalize your designs, and get detailed instructions on cropping, please refer to Section 3.2 for how to use our **MUNBYN Editor**.

4.2. Windows Driver Installation for USB-C Cable

Scan the QR code on the right for the video tutorial:

munbyn.biz/402bwindv

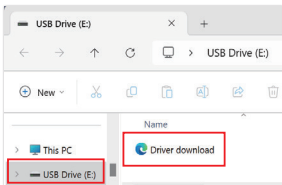
Note:

Enter the link using only lowercase letters and numbers.



Windows Setup Video

1. Turn your printer on.
2. Connect the printer to your computer using the original USB-C cable.
3. Open the removable drive on your computer, and run the driver file that matches your operating system.



Download macOS driver with the model RW402B printer

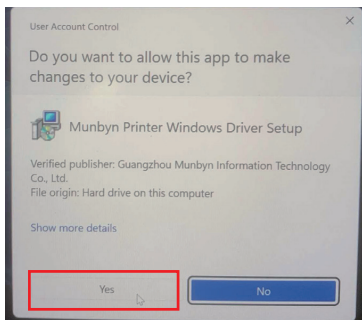
Download Windows driver with the model RW402B printer

View the document with the model RW402B printer

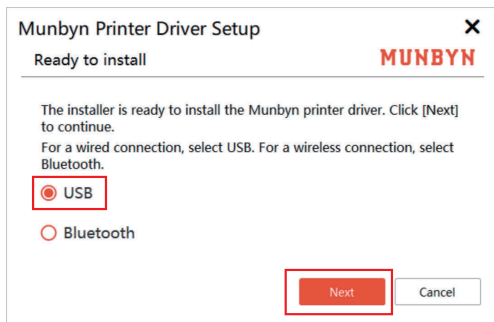
Tips: You can also access the driver by using this link:
munbyn.biz/402bwindv

4.Run the driver, and follow the installation steps until download is completed.

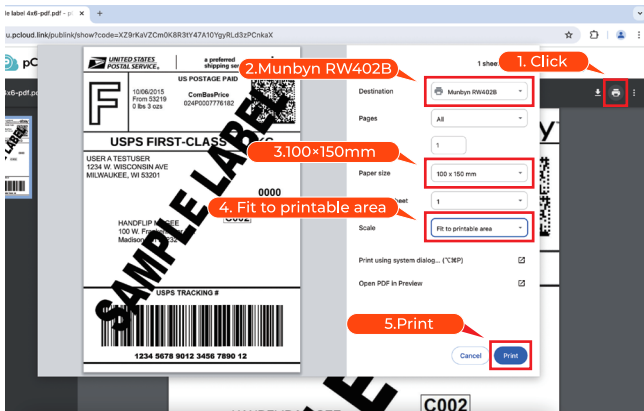
5.During the Windows driver installation, you may encounter a security warning. Click "Yes" to proceed. This is a normal part of the process and nothing to worry about.



6. Click "USB" > "Next"



7. Access label templates and test for proper printing by using this link: munbyn.biz/sample46



Note: If the USB port fails to recognize the printer, please follow these steps:

- Unplug the USB cable from both the computer and the printer, then reinsert it, ensuring the cable is securely connected.
- Restart the printer by turning it off and then turning it back on.

8. Setup is complete.

To create custom labels, personalize your designs, and get detailed instructions on cropping, please refer to Section 3.2 for how to use our **MUNBYN Editor**.

5. Pro Tips

- **Anytime you change your label**, adjust the slot to securely hold the paper in place, and then run the automatic label identification.
- Press the feed button on the printer to **skip a blank label**.
- **To run a self-test**, double-click the feed button.
- **Avoid using poor-quality labels** as they can damage the printer.
- Regularly **clean the print head**, especially after printing 500 sheets.
- **If the paper is jammed and the red light flashes**, first clear the jammed paper before running the automatic label identification.
- Always insert the MUNBYN printer into the same USB port on your computer to avoid creating duplicate copies of the printer in your operating system.

6. FAQ

For the RW402B FAQ file, please visit:

munbyn.biz/402bfaq

Tips: For the latest FAQ and information on the **MUNBYN Editor**, we recommend visiting our Help Center using this link: munbyn.biz/hpweb

6.1. How do I maintain the print head?

Scan the QR code for the troubleshooting tips:







6.2. Why is the printed label not clear?


Scan the QR code for the troubleshooting tips:



7. Light Indicators

Light Status	Color Identification	Status	Troubleshoot
	Green Light (always on)	Normal operation	/
	Blue Light (always on)	Bluetooth connected	/
	Red Light (always on)	Label paper is not identified	1. Rearrange the label papers. 2. Press and hold the feed button until you hear one beep to initiate label identification.
		Cover is not closed	Check that the cover is completely closed
	Flashing Green and Red	Printer head is overheated	1. Allow the print head to cool down. 2. The printer will automatically resume once cooled.

8. Feed Button

Printer Status	Feed Button Action	Function
Standby 	Single Click	Feed paper
	Double Click	Print self-test
	Press and hold on until you hear one beep	Automatic label identification
	Press and hold on until you hear three beeps (for 6 seconds)	Reset printer

9. Specifications

Method	Direct Thermal
Resolution	203 DPI
Max Printing Speed	5.9 in/s (150 mm/s)
Paper Width	1.57 - 4.25 inches (40 - 108 mm)
Paper Thickness	0.06 - 0.25 mm
Power Adapter	24V / 2.5A
Printing Life	93.2 mi (TPH 150 km)
Operating Environment	Temperature: 32 - 122°F (0 - 50°C) Humidity: 10-90% (non-condensing)
Storage Environment	Temperature: -4 - 158°F (-20 to 70°C) Humidity: 5-95% (non-condensing)
Connection	Bluetooth / USB
Weight	1.39 lbs / 0.63kg
Dimensions	7.87 x 3.15 x 3.54 inches (200 x 80 x 90 mm)

10. Safety Notices

- The printer head can become very hot after printing labels. Do not touch the printer head.
- Do not bend the power cord excessively or place objects on the cord.
- Do not use the printer if you find any irregularities as these could result in fire or electrocution.
- Keep the printer out of reach of children.
- Use only approved accessories and do not try to disassemble or repair the unit by yourself.
- Keep the printer away from water and other objects that could penetrate the components.
- Please unplug the printer when it is not in use for long periods.
- If you have problems connecting to the printer with the Munbyn Print App, you can try to restart the app or reinstall the app. If your problem is still not resolved, please contact us.

11. FCC Statement

This device complies with Part 15 of the FCC Rules. Operation is subject to the following two conditions:

- (1) This device may not cause harmful interference, and
- (2) This device must accept any interference received, including interference that may cause undesired operation.

Warning: Changes or modifications not expressly approved by the party responsible for compliance could void the user's authority to operate the equipment.

NOTE: This equipment has been tested and found to comply with the limits for a Class B

digital device, pursuant to Part 15 of the FCC Rules. These limits are designed to provide reasonable protection against harmful interference in a residential installation.

This equipment generates uses and can radiate radio frequency energy and, if not installed and used in accordance with the instructions, may cause harmful interference to radio communications. However, there is no guarantee that interference will not occur in a particular installation. If this equipment does cause harmful interference to radio or television reception, which can be determined by turning the equipment off and on, the user is encouraged to try to correct the interference by one or more of the following measures:

- Reorient or relocate the receiving antenna.
- Increase the separation between the equipment and receiver.
- Connect the equipment into an outlet on a circuit different from that to which the receiver is connected.
- Consult the dealer or an experienced radio/TV technician for help.

FCC Radiation Exposure Statement

This equipment complies with FCC radiation exposure limits set forth for an uncontrolled environment. This equipment should be installed and operated with minimum distance 20cm between the radiator & your body

12. Tech Support

E-mail:

support@munbyn.com

WhatsApp:

+86 178 1788 1067

Phone:

+1 (628) 229 3612

Support Hours:

24 hours a day,
Monday to Friday



Scan to contact
Technical Support



Facebook Messenger
MUNBYN Official

MUNBYN provides a 24-month warranty and free lifetime service.

If you encounter any issues with the product, please contact the MUNBYN team for prompt troubleshooting assistance or a replacement.

Model: RW402B

MUNBYN

Unleash Business Creativity